

SOLENOID VALVES DIRECT ACTING GENERAL PURPOSE SOLENOID VALVES

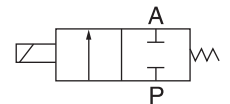


Specification

Model	K2W025-06	K2W025-08	K2W040-10	K2WH012-06	K2WH012-08	K2WH020-10
Fluid	Air, Water & Oil					
Operation	Direct Acting					
Type	Normally Closed					
Material of Seal	NBR					
Orifice mm	2.5	2.5	4	1.2	1.2	2
Flow Rate l/pm	3.40	3.40	6.00	0.70	0.70	1.70
Port Size	1/8"	1/4"	3/8"	1/8"	1/4"	3/8"
Fluid Viscosity	20 CST					
Max Pressure	0.00 to 0.98MPa (0-142psi)			0.00 to 3.40MPa (0-497psi)		
Working Pressure	0.00 to 0.68MPa (0-99psi)			0.00 to 1.96MPa (0-284psi)		
Temperature	-5 to +80°C					

Symbol

Normally Closed



Ordering Code

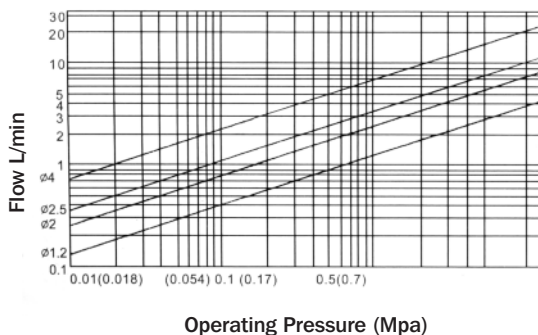
K 2 W	—	H	—	025	—	06	—	230AC
Code		Pressure		Orifice mm		Port Size		Voltage
Two position, two way, brass, direct acting solenoid		Blank : Standard H : High Pressure		012 : 1.2 020 : 2.0 025 : 2.5 040 : 4.0		06 : 1/8" 08 : 1/4" 10 : 3/8"		230AC : 230/50V AC 110AC : 110/50V AC 24AC : 24/50 V AC 24DC : 24V DC 12DC : 12V DC

Product Features

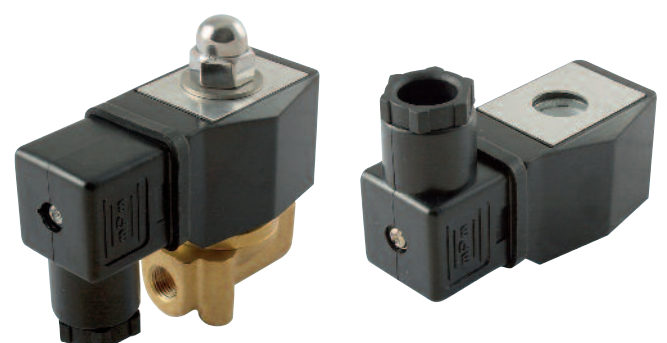
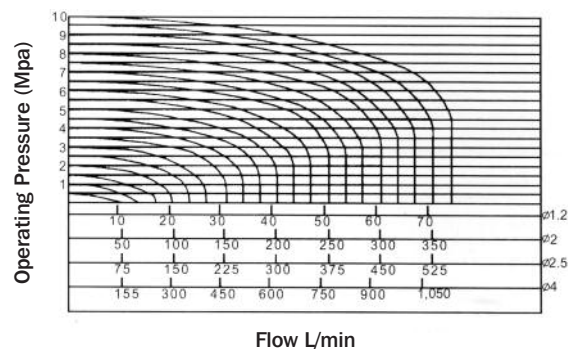
- 2/2 operation.
- Sizes 1/8" to 3/8" BSPP.
- Available in Normally Closed function.
- Spare coils available in:
230/50V AC
110/50V AC
24/50V AC
24V DC
12V DC

Flow Charts

Air



Water



SOLENOID VALVES

DIRECT ACTING GENERAL PURPOSE SOLENOID VALVES



Dimensions

Model	Port (K)	A mm	B mm	C mm	D mm
K2W025-06	1/8"	66.0	30.3	75.0	41.5
K2W025-08	1/4"	66.0	30.3	75.0	41.5
K2W040-10	3/8"	74.0	32.2	85.5	53.0
K2WH012-06	1/8"	66.0	30.3	75.0	40.5
K2WH012-08	1/4"	66.0	30.3	75.0	40.5
K2WH020-10	3/8"	74.0	32.2	85.5	53.0

