

Hand Valves

HMC - Hand valve Male Connector

PART NO.	Tube O.D. (mm)	BSP(P) Thread	Qty / Box
AHMC 0604M	6	1/4	150
AHMC 1008M	10	3/8	100
AHMC 1207M	12	1/2	70



HMCB - Hand Valve Male Connector

PART NO.	Tube O.D. (mm)	BSP(P) Thread	Qty / Box
AHMCB 1509M	15	3/4	30



HUC - Hand valve Union Connector

Fitting Size	PART NO.	Tube O.D. (mm)	Tube O.D. (mm)	Qty / Box
Small Size	AHUC 0608M	6	6	150
	AHUC 0808M	8	8	100
	AHUC 1010M	10	10	100
	AHUC 1212M	12	12	70
Large Size	AHUC 1510M	15	10	50
	AHUC 1512M	15	12	50
	AHUC 1515M	15	15	40
	AHUC 1610M	16	10	50
	AHUC 1616M	16	16	40
	AHUC 2222M	22	22	20



HFA - Hand valve Female Adapter

Fitting Size	PART NO.	Tube O.D. (mm)	BSP(P) Thread	Qty / Box
Small Size	AHFA 0608M	6	1/4	150
	AHFA 1008M	10	3/8	100
	AHFA 1007M	10	1/2	100
	AHFA 1208M	12	3/8	70
Large Size	AHFA 1207M	12	1/2	70
	AHFA 1508M	15	3/8	40
	AHFA 1507M	15	1/2	40
	AHFA 1608M	16	3/8	40
	AHFA 1607M	16	1/2	40



TWV - Three Way Valve

PART NO.	Tube O.D. (mm)	Tube O.D. (mm)	Tube O.D. (mm)	Qty / Box
AHWT 1212M	12	12	12	20



HBC - Hand Barb Connector

PART NO.	Tube O.D. (mm)	Tube I.D.	Qty / Box
AHBC 1507M	15	1/2	100
AHBC 2107M	21	1/2	60
AHBC 2109M	21	3/4	50
AHBC 2207M	22	1/2	60
AHBC 2209M	22	3/4	50



HSV - Hand Stop Valve connector

PART NO.	Tube O.D. (mm)	Tube O.D. (mm)	Qty / Box
AHSV 1515M	15	15	80
AHSV 2115M	21	15	60
AHSV 2215M	22	15	60



THC - Throttle Hand valve Connector

PART NO.	Tube O.D. (mm)	Tube O.D. (mm)	Qty / Box
AHHC 1515M	15	15	20
AHHC 2222M	22	22	10



Check Valves



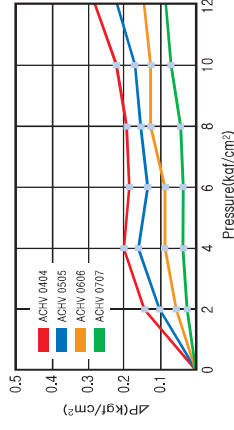
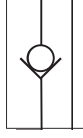
■ Features

- Can be used with a variety of chemicals and gases. However, when using other than water or air, please refer to Chemical Compatibility Tables, or consult our representative.
- Do not apply excessive vibration, shock, torque, or other strong loads on the fittings. The valve body may be damaged or the collets may be dislocated.
- Superior function in a compact size.
- Color : Inch Size - White Acetal Copolymer
Metric Size - Black Acetal Copolymer

Working Pressure and Temperature

Pressure	10bar	5bar
Temperature	1°C (35°F) ~ 20°C (70°F)	65°C (150°F)

Check Valve Sign



CHV - Check Valve

PART NO.	Outlet Tube O.D.	Inlet Tube O.D.	Qty / Box
ACHV 0404	1/4	1/4	300
ACHV 0405	1/4	5/16	250
ACHV 0505	5/16	5/16	250
ACHV 0606	3/8	3/8	200
ACHV 0707	1/2	1/2	150



DCHV - Double Check Valve

PART NO.	Tube O.D.	Tube O.D.	Qty / Box
ADCHV 0404	1/4	1/4	200



DCHV - Double Check Valve

PART NO.	Tube O.D. (mm)	Tube O.D. (mm)	Qty / Box
ADCHV 1515M	15	15	50

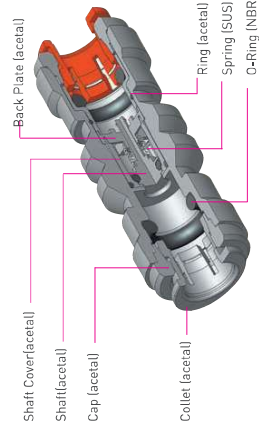


MCHV - Mini Check Valve

PART NO.	Tube O.D.	NPTF Thread	Qty / Box
AMCHV 0402W	1/4	1/8	500



• 1kgf/cm² - 980cc/min



VALVES (WHITE / INCH)

Control Valves

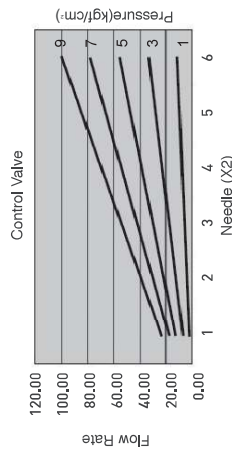
■ Features

- Highly durable and fatigue resistant.
- Can be used with a variety of chemicals & gases. However, when using other than water or air, please refer to the Chemical Compatibility Tables, or consult our representative.
- Do not apply excessive vibration, torque, shock, or other strong loads on the fittings. The valve body may be damaged or collectants may be dislocated.
- Color : Inch Size - White Acetal Copolymer
Metric Size - Black Acetal Copolymer

Working Pressure and Temperature

Pressure	10bar	4bar
Temperature	1°C (35°F) ~ 20°C (70°F)	65°C (150°F)

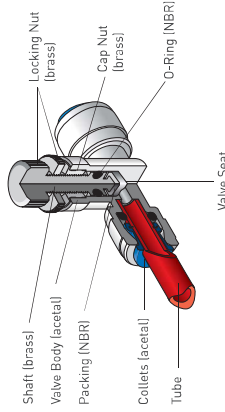
Flow Rate Per Rotation of Valve Stem



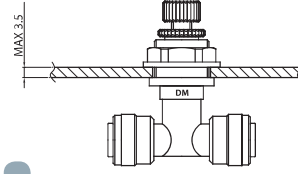
※ Above data may vary depending on the time and temperature variations.



Structure



Assembly



CUC - Control valve Union Connector

PART NO.	Tube O.D.	Tube O.D.	Qty / Box
ACUC 0404	1/4	1/4	250
ACUC 0606	3/8	3/8	150

PART NO.	Tube O.D.(mm)	Tube O.D.(mm)	Qty / Box
ACUC 0606M	6	6	200
ACUC 1010M	10	10	150



CFA - Control valve Female Adapter

PART NO.	Tube O.D.	NPTF Thread	Qty / Box
ACFA 0404	1/4	1/4	250
ACFA 0606	3/8	3/8	150

PART NO.	Tube O.D.(mm)	BSPP(PT) Thread	Qty / Box
ACFA 0606M	6	1/4	200
ACFA 1010M	10	3/8	150



CEU - Control valve Elbow Union

PART NO.	Tube O.D.	Tube O.D.	Qty / Box
ACEU 0404	1/4	1/4	250
ACEU 0606	3/8	3/8	150

PART NO.	Tube O.D.(mm)	Tube O.D.(mm)	Qty / Box
ACEU 0606M	6	6	250
ACEU 1010M	10	10	150



CMC - Control valve Male Connector

PART NO.	Tube O.D.	NPTF Thread	Qty / Box
ACMC 0404	1/4	1/4	250
ACMC 0606	3/8	3/8	150

PART NO.	Tube O.D.(mm)	BSPP(PT) Thread	Qty / Box
ACMC 0606M	6	1/4	250
ACMC 1010M	10	3/8	150



BCUC - Bulkhead Control valve union Connector

PART NO.	Tube O.D.	Tube O.D.	Qty / Box
ABCUC 0404	1/4	1/4	200
ABCUC 0606	3/8	3/8	120

PART NO.	Tube O.D.(mm)	Tube O.D.(mm)	Qty / Box
ABCUC 0606M	6	6	150
ABCUC 1010M	10	10	120



BCFA - Bulkhead Control valve Female Adapter

PART NO.	Tube O.D.	Tube O.D.	Qty / Box
ABCFA 0404	1/4	1/4	200
ABCFA 0606	3/8	3/8	120

PART NO.	Tube O.D.(mm)	Tube O.D.(mm)	Qty / Box
ABCFA 0606M	6	1/4	150
ABCFA 1010M	10	3/8	120



BCUEU - Bulkhead Control valve Elbow Union

PART NO.	Tube O.D.	Tube O.D.	Qty / Box
ABCUEU 0404	1/4	1/4	200
ABCUEU 0606	3/8	3/8	120

PART NO.	Tube O.D.(mm)	Tube O.D.(mm)	Qty / Box
ABCUEU 0606M	6	6	150
ABCUEU 1010M	10	10	120



BCMC - Bulkhead Control valve Male Connector

PART NO.	Tube O.D.	Tube O.D.	Qty / Box
ABCMC 0404	1/4	1/4	200
ABCMC 0606	3/8	3/8	120

PART NO.	Tube O.D.(mm)	Tube O.D.(mm)	Qty / Box
ABCMC 0606M	6	1/4	150
ABCMC 1010M	10	3/8	120

