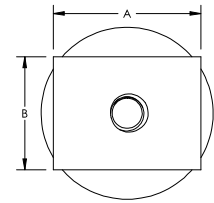
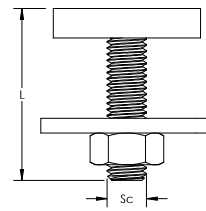


## KP T-Bolt for C-Channel E4

### Features

- For use with C-Profiles
- Pre-mounted with large washer and nut



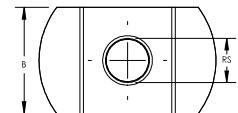
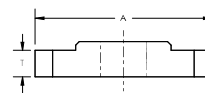
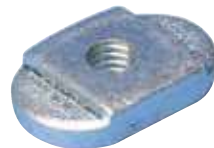
Channel Type: E4  
Material: Steel  
Finish: Electrogalvanized

Part Number	Article Number	Screw Diameter	Screw Length	A	B
KP3808025	590201	M8	25 mm	30 mm	23 mm
KP3808035	590200	M8	35 mm	30 mm	23 mm
KP3808040	590210	M8	40 mm	30 mm	23 mm
KP3808050	590202	M8	50 mm	30 mm	23 mm
KP3808080	590203	M8	80 mm	30 mm	23 mm
KP3808100	590204	M8	100 mm	30 mm	23 mm
KP3810035	590207	M10	35 mm	30 mm	23 mm
KP3810050	590330	M10	50 mm	30 mm	23 mm
KP3810080	590208	M10	80 mm	30 mm	23 mm

## ECN Universal Nut

### Features

- Universal channel nut for C-Profiles



Material: Steel  
Finish: Electrogalvanized

Part Number	Article Number	Channel Type	Rod Size	Thickness	A	B
ECNUNI06	585430	E0, E1, E2, E2L, E3	M6	4 mm	24 mm	15 mm
ECNUNI08	585440	E0, E1, E2, E2L, E3	M8	4 mm	24 mm	15 mm
ECNUNI10	585450	E0, E1, E2, E2L, E3	M10	4 mm	24 mm	15 mm