

# MANUAL & MECHANICAL VALVES



## Installation & Application Data

- 1) Before installing, be sure the valve hasn't been damaged in transit.
- 2) Use clean air filtered to  $40\mu\text{m}$ . Be aware of the flow direction & port size.
- 3) Please note whether the installation conditions meet the technical requirements (such as actuation frequency, working pressure & temperature) before installing the valve.
- 4) Notice the flow direction of air during installation, P is the air input, A (B) is the outlet port and R (S) is the exhaust port.
- 5) Avoid freezing temperature and vibration.
- 6) Before using fittings and tube make sure they are clean.

# MANUAL 3/2 WAY VALVES KSC SERIES



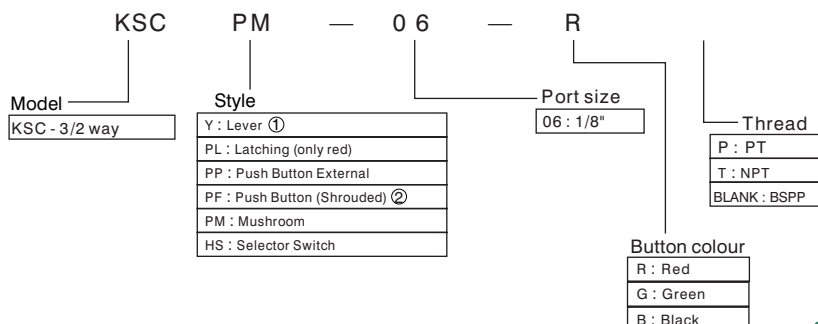
## Specification

Model	KSCPP	KSCPM	KSCPF	KSCPL	KSY	KSCHS
Fluid	Air (to be filtered by 40µm filter element)					
Operating	Manual Control Direct Acting Type					
Port	1/8"					
Orifice	8.0mm <sup>2</sup> (Cv=0.45)					
Valve Type	3/2					
Lubrication	Not Required					
Pressure Range	0-0.8 MPa (0-114psi)					
Proof Pressure	1.5 MPa (215psi)					
Temperature	-20 to +70°C					
Material of Body	Aluminium Alloy					

① G thread as standard, PT thread, NPT threads are available on request

② If using lubricants the practice must remain constant for the life of the valve.  
Lubricants like ISO VG32 or equivalent are recommended.

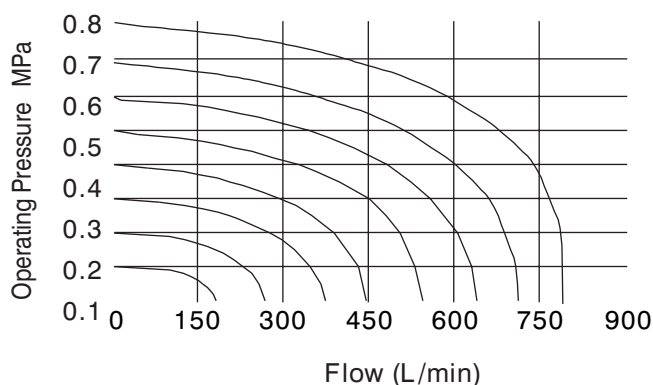
## Ordering Code



① Note: The type KSY06 has no color code.

② Note: The types of PP, PF, PM and HS have three button colors for option.

## Flow Chart



## Product Features

- 1) Valve core is manufactured to close tolerance and is quick in operation. Lubrication is not necessary but once oil is added to valve it must be continued.
- 2) Multi-mounting makes it convenient to install and apply.

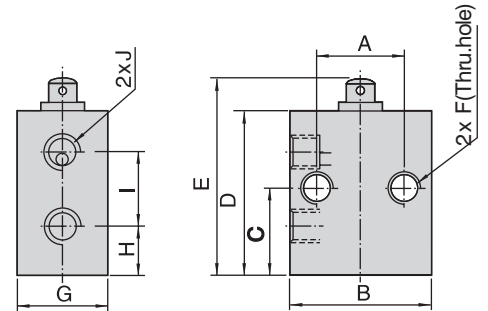


# MANUAL 3/2 WAY VALVES KSC SERIES

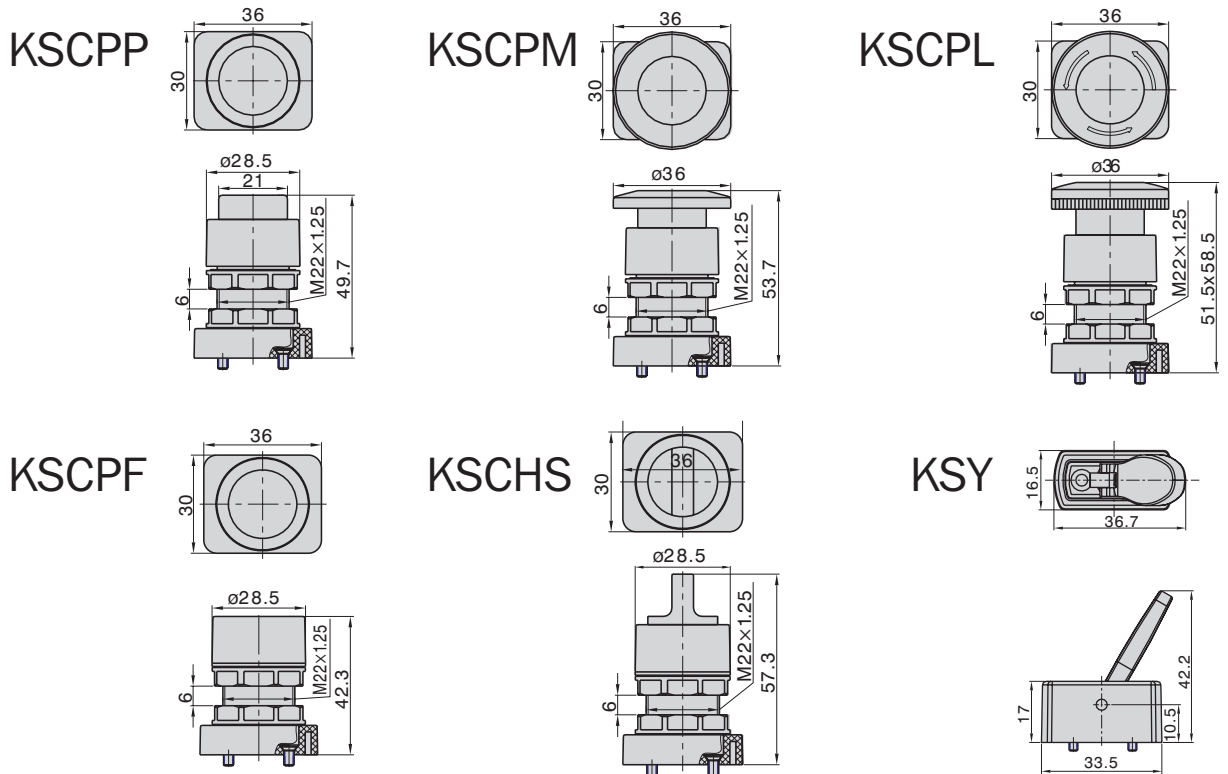


## Dimensions Valve Body

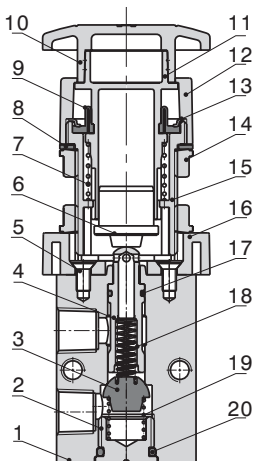
A	B	C	D	E	F	G	H	I	J
23	30	20.5	41	47	M5 × 0.8	16.5	11.5	17.5	1/8"



## Operating Heads



## Inner Structure



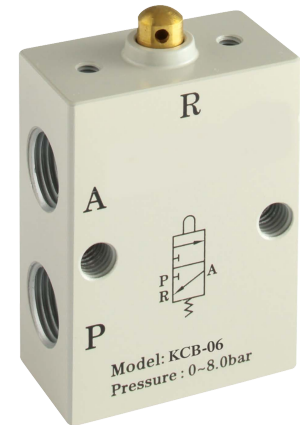
No.	Item	No.	Item
1	Body	11	Main Body of Button
2	End Cover	12	Top Cover
3	Stopper Plug	13	Button Ring
4	Valve Core	14	Clamping Nut
5	Screw	15	Button Body
6	Button Pressing Buckle	16	Connector
7	Spring	17	O-ring
8	Clamping Gasket	18	Spring
9	Dust Cover	19	Spring
10	Button Cap	20	O-ring

# MANUAL 3/2 WAY VALVES KSC & KCB SERIES



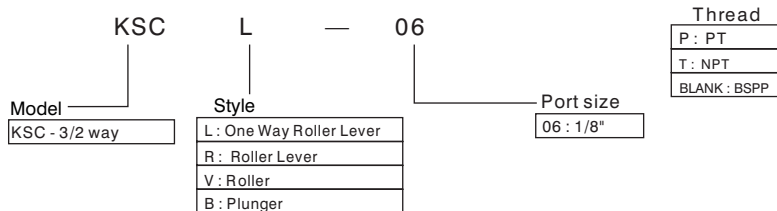
## Specification

Model	KSCL	KSCR	KSV	KCB
Fluid	Air (to be filtered by 40µm filter element)			
Operating	Mechanical Control Direct Acting Type			
Port	1/8"			
Orifice	8.0mm <sup>2</sup> (Cv=0.45)			
Valve Type	3/2			
Lubrication	Not Required			
Pressure Range	0-0.8 MPa (0-114psi)			
Proof Pressure	1.5 MPa (215psi)			
Temperature	-20 to +70°C			
Material of Body	Aluminium Alloy			



- ① G thread as standard, PT thread, NPT threads are available on request  
 ② If using lubricants the practice must remain constant for the life of the valve.  
 Lubricants like ISO VG32 or equivalent are recommended.

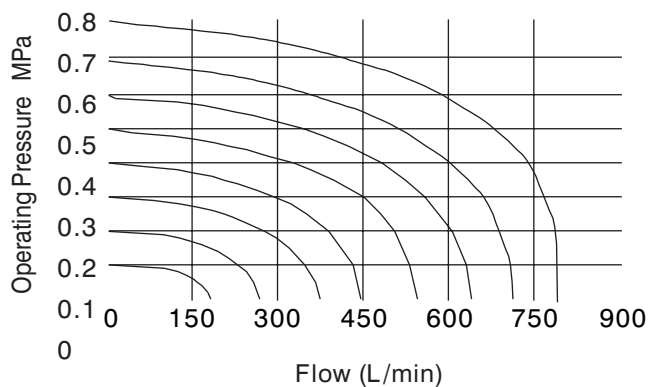
## Ordering Code



## Product Features

- 1) Valve core is manufactured to close tolerance and is quick in operation. Lubrication is not necessary but once oil is added to valve it must be continued.
- 2) Multi-mounting makes it convenient to install and apply.

## Flow Chart



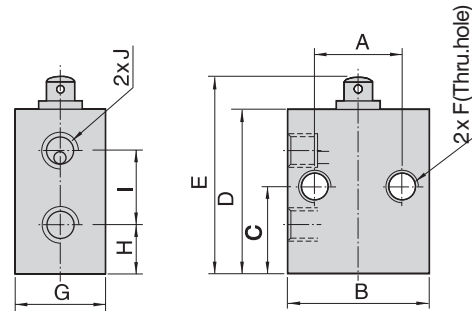
# MANUAL 3/2 WAY VALVES KSC & KCB SERIES



## Dimensions

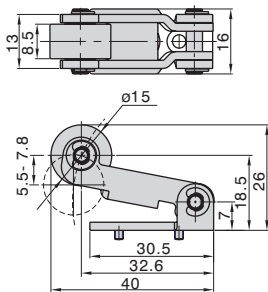
### Valve Body

A	B	C	D	E	F	G	H	I	J
23	30	20.5	41	47	M5 × 0.8	16.5	11.5	17.5	1/8"

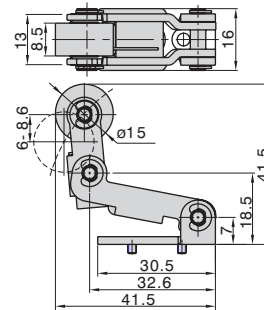


## Operating Heads

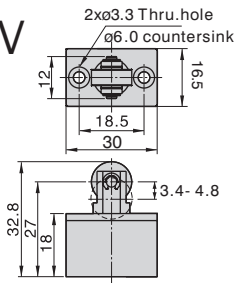
### KSCR



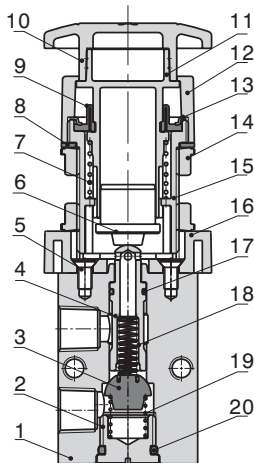
### KSCL



### KSCV



## Inner Structure



No.	Item	No.	Item
1	Body	11	Main Body of Button
2	End Cover	12	Top Cover
3	Stopper Plug	13	Button Ring
4	Valve Core	14	Clamping Nut
5	Screw	15	Button Body
6	Button Pressing Buckle	16	Connector
7	Spring	17	O-ring
8	Clamping Gasket	18	Spring
9	Dust Cover	19	Spring
10	Button Cap	20	O-ring