

# PILOT, LOGIC & SPECIALIST



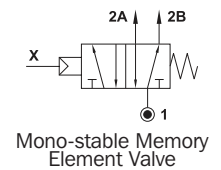
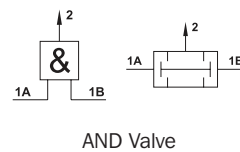
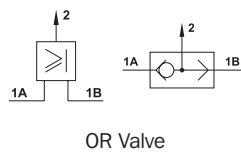
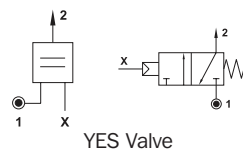
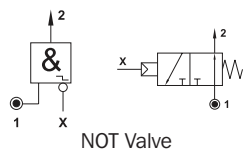
## VALVES LOGIC VALVES



### Specification

Model	KP080394	KP080494	KP080214	KP080254	KP040034
Fluid	Air (to be filtered by 50µm filter element)				
Port	4 mm Push-in				
Orifice	2.5 mm				
Flow Rate @ 6 bar	100 Nl/min				
Operating Pressure	0.02 - 1MPa (0.2 - 145psi)				
Temperature	0°C to +60°C				
Material of Body	Aluminium				
Material of Spring	Stainless Steel				
Material of Seals	NBR				
Material of Internal Components	Brass OT58				
Actuating pressure at 6 bar	1.2 bar	1 bar	-	-	2 bar

### Symbols



### Product Features

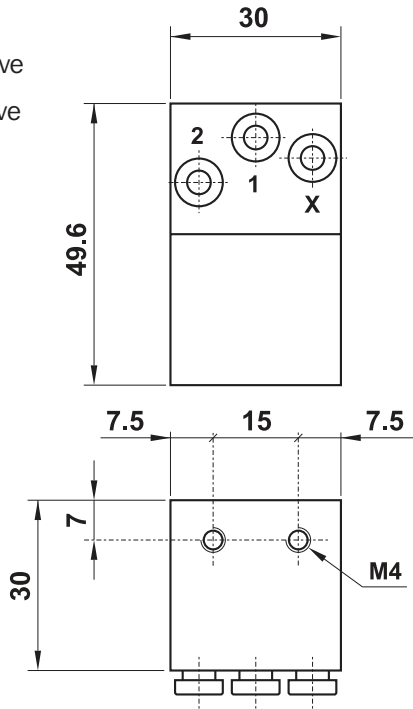
1. Pneumatic logic is a reliable and functional control method for industrial processes
2. Logic devices are used in processes where compressed air is the only energy source available
3. Compact and lightweight
4. 4mm push-in connectors fitted, to enable quick and easy installation
5. Will operate in a lubricated and non-lubricated system

## VALVES LOGIC VALVES

### Dimensions

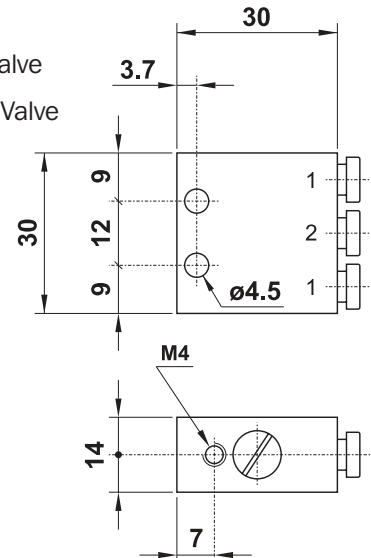
Model:

- **KP080394** NOT Valve
- **KP080494** YES Valve



Model:

- **KP080214** OR Valve
- **KP080254** AND Valve



Model:

- **KP040034** Mono-stable Memory Element Valve

