

# SOLENOID VALVE 3/2 MINI SOLENOID VALVES



## Specification

Model	KCV1-M5	KCV1-06
Fluid	Air (to be filtered by 40µm filter element)	
Acting	Direct	
Port	M5	1/8"
Orifice	Ø 1.2mm	
Valve Type	3/2	
Operating Pressure	0-0.8MPa (0-114psi)	
Proof Pressure	1.5MPa (215psi)	
Temperature	-20 to +70°C	
Material of Body	Aluminium Alloy	
Lubrication	Not Required	

## Coil Specification

Item	Specification
Standard voltage	24V DC 110V 50/60Hz 220V 50/60Hz
Scope of voltage	AC : ± 15% DC : ± 10%
Power consumption	AC : 3.5VA DC : 3.0W
Protection	IP65 (DIN40050)
Temperature classification	B Class
Electrical entry	Terminal
Activating time	0.05 sec

## Symbol



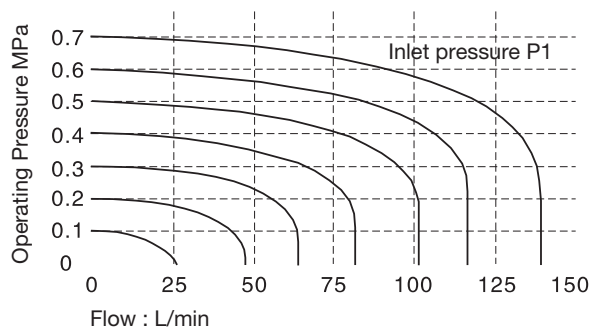
## Ordering Code

K C V 1	—	0 6	—	A
Model		Port Size		Voltage
KCV1 : Solenoid Valve 3/2 Way		M5 : M5		B : 24V DC
		06 : 1/8"		C : 110V 50/60Hz
				A : 220V 50/60Hz

## Product Features

1. Direct acting
2. Sub-based mounted
3. Manual override
4. Several standard voltages are available
5. Several valves can be gang mounted together with the use of coupling screws and O-rings, saving space on installations

## Flow Chart

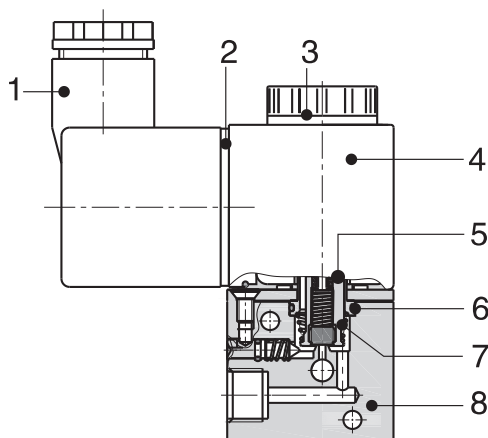
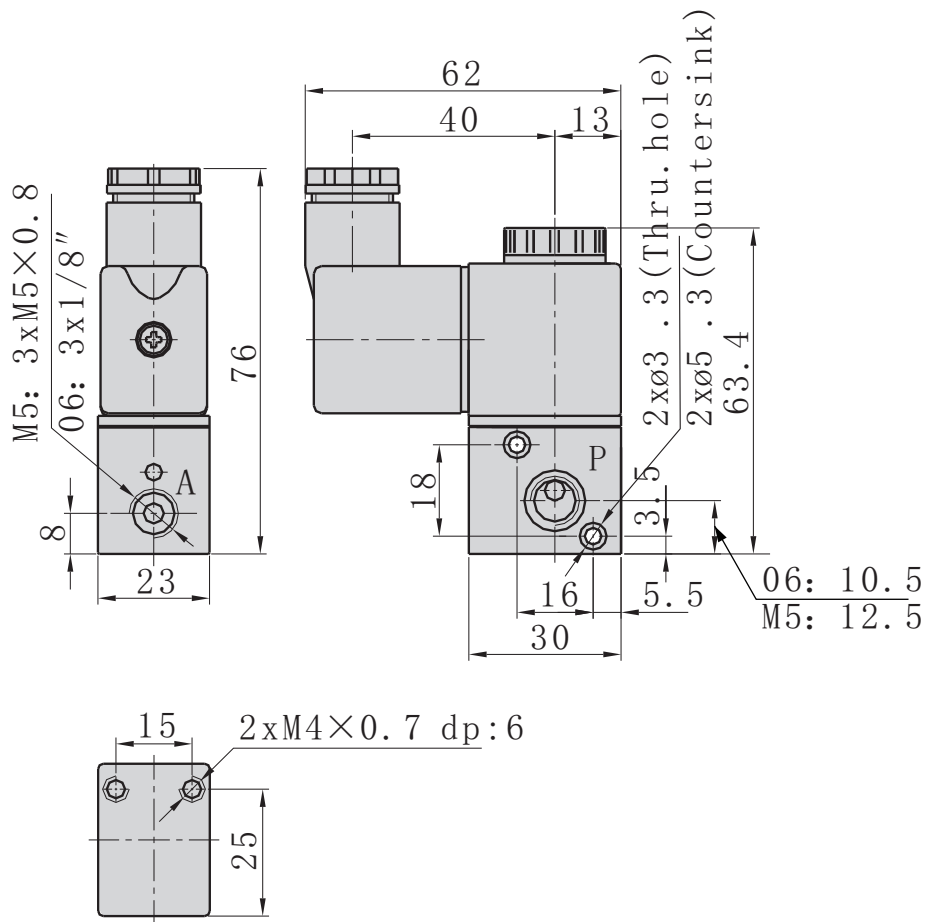


# SOLENOID VALVE

## 3/2 MINI SOLENOID VALVES



### Dimensions



### Inner Structure

No.	Item
1	Connector
2	Gasket
3	Coil Nut
4	Coil Nut
5	Armature
6	O-ring
7	Return Spring
8	Body

# SOLENOID VALVE

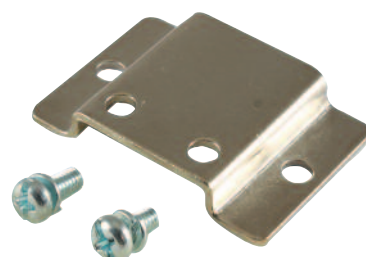
## 3/2 MINI SOLENOID VALVES

### -GANG MOUNT COMPONENTS



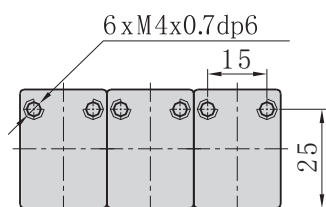
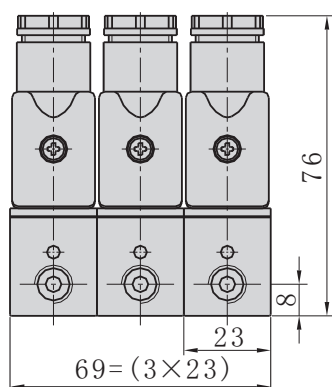
#### Ordering Code

KCV1-P31	Long Coupling Screws & O-ring
KCV1-P30	Short Coupling Screws & Fixing Nuts
KCV1-P32	Base Plate & Fixing Screws

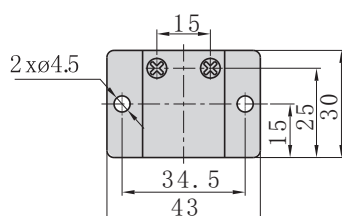
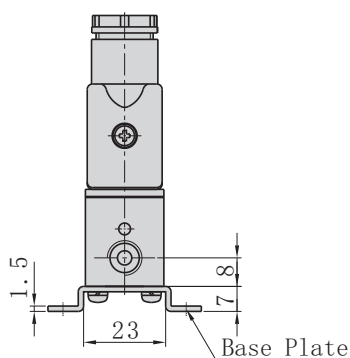


#### Series Connection – Dimensions

##### 3 Gang Mounted Valves



##### Base Plate



#### How to Connect

