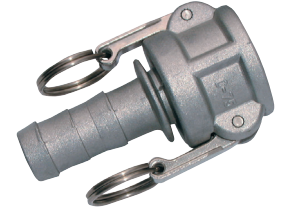
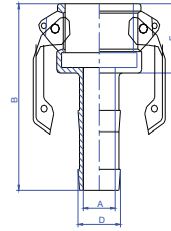
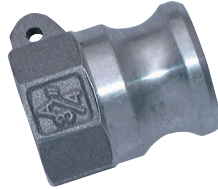
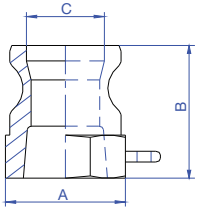


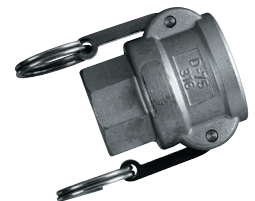
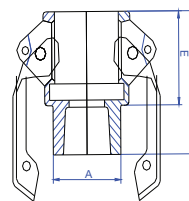
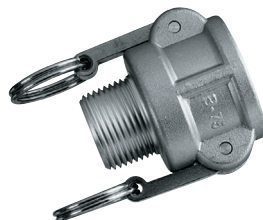
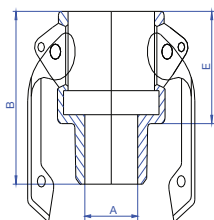
# Cam & Groove Quick Couplings

## Aluminium Couplings



A TYPE				
Part Number	A	B	C	Pressure
A12-AU	26	37	16.5	250 psi
A34-AU	32.4	41	21.5	250 psi
A1-AU	38.5	51.6	24	250 psi
A114-AU	48.5	55	29	250 psi
A112-AU	56	56	37.8	150 psi
A2-AU	66	59	47.1	150 psi
A212-AU	82	80	58	150 psi
A3-AU	96	71.7	74.4	125 psi
A4-AU	122.5	73.8	101	125 psi
A6-AU	181	84	155	75 psi
A12-AU-NPT	26	37	16.5	250 psi
A34-AU-NPT	32.4	41	21.5	250 psi
A1-AU-NPT	38.5	51.6	24	250 psi
A114-AU-NPT	48.5	55	29	250 psi
A112-AU-NPT	56	56	37.8	150 psi
A2-AU-NPT	66	59	47.1	150 psi
A212-AU-NPT	82	80	58	150 psi
A3-AU-NPT	96	71.7	74.4	125 psi
A4-AU-NPT	122.5	73.8	101	125 psi
A6-AU-NPT	181	84	155	75 psi

C TYPE					
Part Number	A	B	D	E	Pressure
C12-AU	8	70	14	29	250 psi
C34-AU	14	80	21.5	33.2	250 psi
C1-AU	19.5	94.9	27.4	39.9	250 psi
C114-AU	25.3	102.5	34.1	45.5	250 psi
C112-AU	36.8	116.5	39.6	46	150 psi
C2-AU	43	134.5	52.4	52.5	150 psi
C212-AU	56	142.5	66.6	55.5	150 psi
C3-AU	66.2	143	77.8	58	125 psi
C4-AU	91.8	162.5	103.2	59	125 psi
C6-AU	146	191	155	67	75 psi

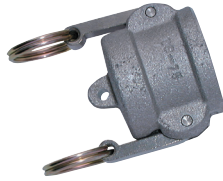
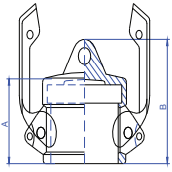


B TYPE				
Part Number	A	B	E	Pressure
B12-AU	14	44	28	250 psi
B34-AU	18	52.2	33.2	250 psi
B1-AU	25	59	39.9	250 psi
B114-AU	32	65.5	45.5	250 psi
B112-AU	38.5	69.5	46	150 psi
B2-AU	49	77	52.5	150 psi
B212-AU	60	84.5	55.5	150 psi
B3-AU	77	59.5	58	125 psi
B4-AU	100	92	59	125 psi
B12-AU-NPT	14	44	28	250 psi
B34-AU-NPT	18	52.2	33.2	250 psi
B1-AU-NPT	25	59	39.9	250 psi
B114-AU-NPT	32	65.5	45.5	250 psi
B112-AU-NPT	38.5	69.5	46	150 psi
B2-AU-NPT	49	77	52.5	150 psi
B212-AU-NPT	60	84.5	55.5	150 psi
B3-AU-NPT	77	59.5	58	125 psi
B4-AU-NPT	100	92	59	125 psi
B6-AU-NPT	152	106	67	75 psi

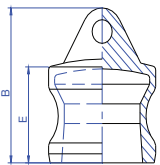
D TYPE				
Part Number	A	B	E	Pressure
D12-AU	26	43	29	250 psi
D34-AU	32.41	52.2	33.2	250 psi
D1-AU	40.49	59	39.9	250 psi
D114-AU	50.8	67.5	45.5	250 psi
D112-AU	53.98	69.5	46	150 psi
D2-AU	68.27	76	52.5	150 psi
D212-AU	80.98	84.5	55.5	150 psi
D3-AU	92.2	89.5	58	125 psi
D4-AU	125.43	92	59	125 psi
D6-AU	182	114	70	75 psi
D12-AU-NPT	26	43	29	250 psi
D34-AU-NPT	32.41	52.2	33.2	250 psi
D1-AU-NPT	40.49	59	39.9	250 psi
D114-AU-NPT	50.8	67.5	45.5	250 psi
D112-AU-NPT	53.98	69.5	46	150 psi
D2-AU-NPT	68.27	76	52.5	150 psi
D212-AU-NPT	80.98	84.5	55.5	150 psi
D3-AU-NPT	92.2	89.5	58	125 psi
D4-AU-NPT	125.43	92	59	125 psi
D6-AU-NPT	182	114	70	75 psi

# Cam & Groove Quick Couplings

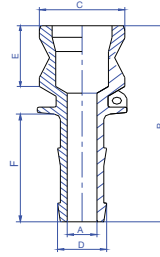
## Aluminium Couplings



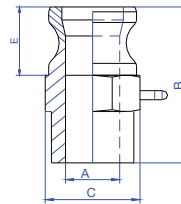
DC TYPE		
Part Number	A	B
DC12-AU	29	36
DC34-AU	33.2	43.2
DC1-AU	39.9	54.9
DC114-AU	45.5	60.5
DC112-AU	46	49.5
DC2-AU	51.5	66.5
DC212-AU	55.5	70.5
DC3-AU	58	73
DC4-AU	59	74
DC6-AU	70	95



DP TYPE			
Part Number	B	E	Pressure
DP12-AU	25	34	250 psi
DP34-AU	36	26	250 psi
DP1-AU	49.5	34.8	250 psi
DP114-AU	55	40	250 psi
DP112-AU	54.5	41	250 psi
DP2-AU	61	46	250 psi
DP212-AU	65	50	150 psi
DP3-AU	64	49	125 psi
DP4-AU	65.8	50.8	125 psi
DP6-AU	88	62	75 psi



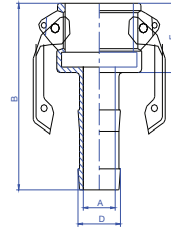
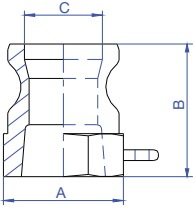
E TYPE							
Part Number	A	B	C	D	E	F	Pressure
E12-AU	8	74	24	14	23	41	250 psi
E34-AU	18.7	85.3	32.1	21.5	26	47.8	250 psi
E1-AU	19.5	100.8	36.73	27.4	33.8	55	250 psi
E114-AU	31.3	109	45.52	34.1	39	57	250 psi
E112-AU	30.8	123.5	53.34	39.6	41	70.5	150 psi
E2-AU	43	142	63.09	52.4	46	82	150 psi
E212-AU	56	150.5	75.82	66.6	48	87	150 psi
E3-AU	74	157	91.5	77	50	92	125 psi
E4-AU	91.8	170.5	119.58	103.2	52.8	103.5	125 psi
E6-AU	146	184	176	157	60	124	75 psi



F TYPE					
Part Number	A	B	C	E	Pressure
F12-AU	15	49	26	25	250 psi
F34-AU	18	55	32.1	26	250 psi
F1-AU	25	67.8	36.7	34.8	250 psi
F114-AU	32	78	45.52	40	250 psi
F112-AU	38.5	76	53.34	41	150 psi
F2-AU	49	83.5	63.09	46	150 psi
F212-AU	60	97	75.7	50	150 psi
F3-AU	77	99.5	91.5	54	125 psi
F4-AU	100	105.8	119.5	53.8	125 psi
F6-AU	155	119	178	60	75 psi
F12-AU-NPT	15	49	26	25	250 psi
F34-AU-NPT	18	55	32.1	26	250 psi
F1-AU-NPT	25	67.8	36.7	34.8	250 psi
F114-AU-NPT	32	78	45.52	40	250 psi
F112-AU-NPT	38.5	76	53.34	41	150 psi
F2-AU-NPT	49	83.5	63.09	46	150 psi
F212-AU-NPT	60	97	75.7	50	150 psi
F3-AU-NPT	77	99.5	91.5	54	125 psi
F4-AU-NPT	100	105.8	119.5	53.8	125 psi
F6-AU-NPT	155	119	178	60	75 psi

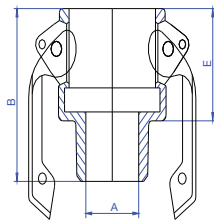
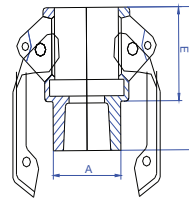
# Cam & Groove Quick Couplings

## Polypropylene Couplings



A TYPE				
Part Number	A	B	C	Pressure
A12-PP	21.5	48	34	250 psi
A34-PP	21.5	48	34	250 psi
A1-PP	24	56	42	250 psi
A114-PP	28.5	64	48	250 psi
A112-PP	36	66	59	250 psi
A2-PP	44	70	71	250 psi
A3-PP	75	82	101	125 psi
A4-PP	93	92	131	125 psi
A12/34-PP-NPT	21.5	48	34	250 psi
A34-PP-NPT	21.5	48	34	250 psi
A1-PP-NPT	24	56	42	250 psi
A114-PP-NPT	28.5	64	48	250 psi
A112-PP-NPT	36	66	59	250 psi
A2-PP-NPT	44	70	71	250 psi
A3-PP-NPT	75	82	101	125 psi
A4-PP-NPT	93	92	131	125 psi

C TYPE						
Part Number	A	B	D	E	G	Pressure
C12-PP	8	79	14	34	50	250 psi
C34-PP	14	87	21	34	50	250 psi
C1-PP	19	99	27	41	60	250 psi
C114-PP	25	103	34	46	76	250 psi
C112-PP	31	110	39	49	85	250 psi
C2-PP	41	124	53	56	94	250 psi
C3-PP	65	65	78	60	133	150 psi
C4-PP	85	85	102	60	160	150 psi

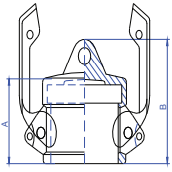


D TYPE					
Part Number	A	B	E	G	Pressure
D12-PP	19	54	34	52	250 psi
D34-PP	21	54	34	52	250 psi
D1-PP	24	60	41	62	250 psi
D114-PP	33	70	46	78	250 psi
D112-PP	39	72	49	88	250 psi
D2-PP	49	83	55	98	250 psi
D3-PP	77	90	60	132	150 psi
D4-PP	98	92	60	165	150 psi
D12/34-PP-NPT	19	54	34	52	250 psi
D34-PP-NPT	21	54	34	52	250 psi
D1-PP-NPT	24	60	41	62	250 psi
D114-PP-NPT	33	70	46	78	250 psi
D112-PP-NPT	39	72	49	88	250 psi
D2-PP-NPT	49	83	55	98	250 psi
D3-PP-NPT	77	90	60	132	150 psi
D4-PP-NPT	98	92	60	165	150 psi

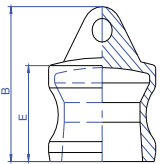
B TYPE					
Part Number	A	B	E	G	Pressure
B12-PP	15	54	34	50	250 psi
B34-PP	18	54	34	50	250 psi
B1-PP	24	60	41	60	250 psi
B114-PP	33	70	46	77	250 psi
B112-PP	37	72	50	82	250 psi
B2-PP	49	82	56	94	250 psi
B3-PP	76	89	59	127	125 psi
B12/34-PP-NPT	15	54	34	50	250 psi
B34-PP-NPT	18	54	34	50	250 psi
B1-PP-NPT	24	60	41	60	250 psi
B114-PP-NPT	33	70	46	77	250 psi
B112-PP-NPT	37	72	50	82	250 psi
B2-PP-NPT	49	82	56	94	250 psi
B3-PP-NPT	76	89	59	127	125 psi
B4-PP-NPT	95	95	60	160	75 psi

# Cam & Groove Quick Couplings

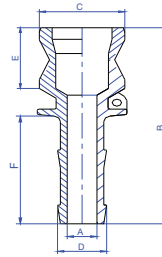
## Polypropylene Couplings



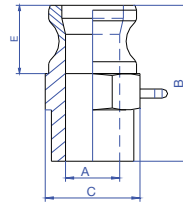
DC TYPE			
Part Number	B	E	G
DC34-PP	21	30	50
DC1-PP	23	34	60
DC114-PP	29	43	75
DC112-PP	35	46	82
DC2-PP	44	49	98
DC3-PP	73	52	127



DP TYPE				
Part Number	A	E	B	Pressure
DP34-PP	21	30	41	250 psi
DP1-PP	23	34	49	250 psi
DP114-PP	29	43	58	250 psi
DP112-PP	35	46	60	250 psi
DP2-PP	44	49	65	250 psi
DP3-PP	73	52	69	150 psi



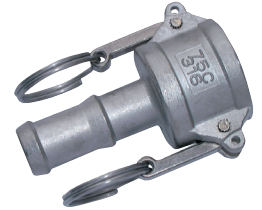
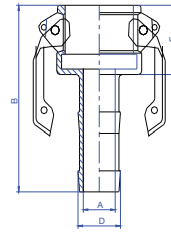
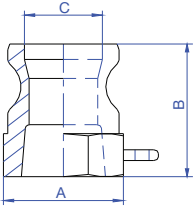
E TYPE					
Part Number	A	B	D	E	C
E12-PP	8	77	14	33	32
E34-PP	14	84	21	33	32
E1-PP	19	97	27	38	37
E114-PP	25	100	34	44	46
E112-PP	31	108	40	47	54
E2-PP	41	125	53	54	63
E3-PP	65	148	79	58	91
E4-PP	85	175	103	65	119



F TYPE					
Part Number	A	B	C	E	Pressure
F12-PP	21	58	34	39	250 psi
F34-PP	22	58	34	39	250 psi
F1-PP	24	66	41	46	250 psi
F114-PP	29	81	48	57	250 psi
F112-PP	37	78	58	54	250 psi
F2-PP	45	90	70	62	250 psi
F3-PP	74	98	100	67	150 psi
F4-PP	93	108	110	71	150 psi
F12/34-PP-NPT	21	58	34	39	250 psi
F34-PP-NPT	22	58	34	39	250 psi
F1-PP-NPT	24	66	41	46	250 psi
F114-PP-NPT	29	81	48	57	250 psi
F112-PP-NPT	37	78	58	54	250 psi
F2-PP-NPT	45	90	70	62	250 psi
F3-PP-NPT	74	98	100	67	150 psi
F4-PP-NPT	93	108	110	71	150 psi

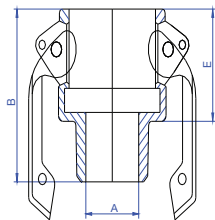
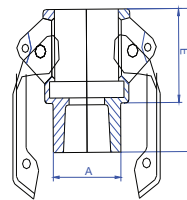
# Cam & Groove Quick Couplings

## 316 Stainless Steel Couplings



A TYPE				
Part Number	A	B	C	Pressure
A12-SS	26	37	16.5	250 psi
A34-SS	31	35	23	250 psi
A1-SS	38	40	27	250 psi
A114-SS	48	50	34	250 psi
A112-SS	56	51	43	150 psi
A2-SS	66	56	52	150 psi
A212-SS	80	73	60	150 psi
A3-SS	94	67	76	125 psi
A4-SS	122	67	103	125 psi
A6-SS	181	84	155	75 psi
A12-SS-NPT	26	37	16.5	250 psi
A34-SS-NPT	31	35	23	250 psi
A1-SS-NPT	38	40	27	250 psi
A114-SS-NPT	48	50	34	250 psi
A112-SS-NPT	56	51	43	150 psi
A2-SS-NPT	66	56	52	150 psi
A212-SS-NPT	80	73	60	150 psi
A3-SS-NPT	94	67	76	125 psi
A4-SS-NPT	122	67	103	125 psi

C TYPE					
Part Number	A	B	D	E	Pressure
C12-SS	8	70	14	29	250 psi
C34-SS	15	81	21	30	250 psi
C1-SS	22	94	27	36	250 psi
C114-SS	27	105	33.5	44	250 psi
C112-SS	34	110	40.5	44	150 psi
C2-SS	46	120	53.5	49	150 psi
C212-SS	60	133	67	53	150 psi
C3-SS	70	143	78	53	125 psi
C4-SS	93	153	103	55	125 psi

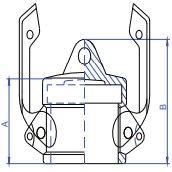


D TYPE				
Part Number	A	B	E	Pressure
D12-SS	26	43	29	250 psi
D34-SS	30	45	30	250 psi
D1-SS	36	55	36	250 psi
D114-SS	45	65	44	250 psi
D112-SS	52	65	44	150 psi
D2-SS	63	71	49	150 psi
D212-SS	80	80	53	150 psi
D3-SS	93	83	53	125 psi
D4-SS	121	85	55	125 psi
D12-SS-NPT	26	43	29	250 psi
D34-SS-NPT	30	45	30	250 psi
D1-SS-NPT	36	55	36	250 psi
D114-SS-NPT	45	65	44	250 psi
D112-SS-NPT	52	65	44	150 psi
D2-SS-NPT	63	71	49	150 psi
D212-SS-NPT	80	80	53	150 psi
D3-SS-NPT	93	83	53	125 psi
D4-SS-NPT	121	85	55	125 psi

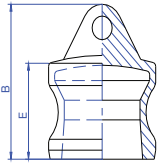
B TYPE				
Part Number	A	B	E	Pressure
B12-SS	14	44	28	250 psi
B34-SS	20	45	29	250 psi
B1-SS	26	55	36	250 psi
B114-SS	34	64	44	250 psi
B112-SS	39	68	44	150 psi
B2-SS	51	72	48	-50 psi
B212-SS	63	84	52	150 psi
B3-SS	75	86	53	125 psi
B4-SS	102	87	54	125 psi
B12-SS-NPT	14	44	28	250 psi
B34-SS-NPT	20	45	29	250 psi
B1-SS-NPT	26	55	36	250 psi
B114-SS-NPT	34	64	44	250 psi
B112-SS-NPT	39	68	44	150 psi
B2-SS-NPT	51	72	48	150 psi
B212-SS-NPT	63	84	52	150 psi
B3-SS-NPT	75	86	53	125 psi
B4-SS-NPT	102	87	54	125 psi

# Cam & Groove Quick Couplings

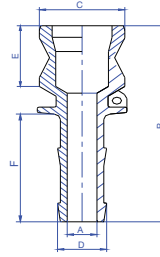
## 316 Stainless Steel Couplings



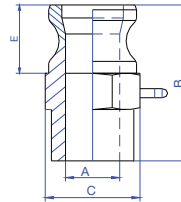
DC TYPE		
Part Number	A	B
DC34-SS	30	43
DC1-SS	36	50
DC114-SS	44	60
DC112-SS	44	60
DC2-SS	48	66
DC3-SS	53	71
DC4-SS	53	75
DC6-SS	70	95



DP TYPE			
Part Number	B	E	Pressure
DP12-AU	25	34	250 psi
DP12-SS	25	34	250 psi
DP34-SS	25	40	250 psi
DP1-SS	27	45	250 psi
DP112-SS	38	55	250 psi
DP2-SS	45	62	250 psi
DP212-SS	47	62	250 psi
DP3-SS	43	62	150 psi



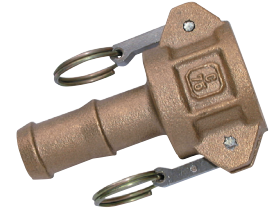
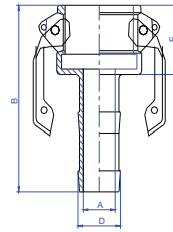
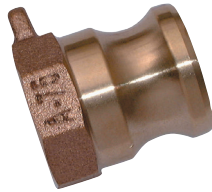
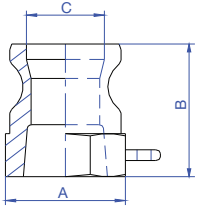
E TYPE							
Part Number	A	B	C	D	E	F	Pressure
E12-SS	8	74	24	14	23	41	250 psi
E34-SS	15	87	32	21	25	50	250 psi
E1-SS	22	98	37	27	28	58	250 psi
E114-SS	27	113	45	33	37	60	250 psi
E112-SS	34	114	53	40	37	63	150 psi
E2-SS	46	131	63	53	46	70	150 psi
E212-SS	60	140	76	67	46	80	150 psi
E3-SS	70	154	91	78	42	90	125 psi
E4-SS	93	164	120	103	44	99	125 psi
E6-AU	146	184	176	157	60	124	75 psi



F TYPE					
Part Number	A	B	C	E	Pressure
F12-AU	15	49	26	25	250 psi
F12-SS	15	49	26	25	250 psi
F34-SS	21	46	34	25	250 psi
F1-SS	27	56	39	31	250 psi
F114-SS	35	67	47	38	250 psi
F112-SS	40	71	56	39	150 psi
F2-SS	52	76.5	65.5	43	150 psi
F212-SS	66	84	78	47	150 psi
F3-SS	80	90	94	49	125 psi
F4-SS	105	93	122	50	125 psi
F12-SS-NPT	15	49	26	25	250 psi
F34-SS-NPT	21	46	34	25	250 psi
F1-SS-NPT	27	56	39	31	250 psi
F114-SS-NPT	35	67	47	38	250 psi
F112-SS-NPT	40	71	56	39	150 psi
F2-SS-NPT	52	76.5	65.5	43	150 psi
F212-SS-NPT	66	84	78	47	150 psi
F3-SS-NPT	80	90	94	49	125 psi
F4-SS-NPT	105	93	122	50	125 psi

# Cam & Groove Quick Couplings

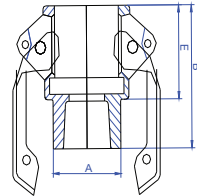
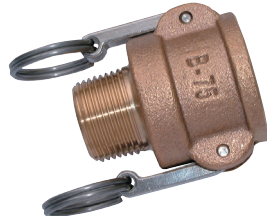
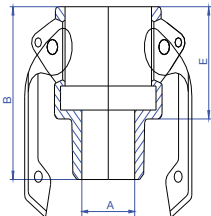
## Brass Couplings



A TYPE				
Part Number	A	B	C	Pressure
A12-BR	26	37	16.5	250 psi
A34-BR	32.4	41	21.5	250 psi
A1-BR	38.5	51.6	24	250 psi
A114-BR	48.5	55	29	250 psi
A112-BR	56	56	37.8	150 psi
A2-BR	66	59	47.1	150 psi
A212-BR	82	80	58	150 psi
A3-BR	96	71.7	74.4	125 psi
A4-BR	122.5	73.8	101	125 psi
A6-BR	181	69.8	150	75 psi
A12-BR-NPT	26	37	16.5	250 psi
A34-BR-NPT	32.4	41	21.5	250 psi
A1-BR-NPT	38.5	51.6	24	250 psi
A114-BR-NPT	48.5	55	29	250 psi
A112-BR-NPT	56	56	37.8	150 psi
A2-BR-NPT	66	59	47.1	150 psi
A212-BR-NPT	82	80	58	150 psi
A3-BR-NPT	96	71.7	74.4	125 psi
A4-BR-NPT	122.5	73.8	101	125 psi
A5-BR-NPT	152	75.5	125	125 psi
A6-BR-NPT	181	69.8	150	75 psi

C TYPE					
Part Number	A	B	D	E	Pressure
C12-BR	8	70	14	29	250 psi
C34-BR	14	80	21.5	33.2	250 psi
C1-BR	19.5	86	27.4	39.9	250 psi
C114-BR	25.3	95	34.1	45.5	250 psi
C112-BR	36.8	108	39.6	46	150 psi
C2-BR	43	120	52.4	52.5	150 psi
C212-BR	56	132	66.6	55.5	150 psi
C3-BR	66.2	141	77.8	58	125 psi
C4-BR	91.8	150	103.2	59	125 psi

C TYPE EXTENDED TAIL					
Part Number	A	B	D	E	Pressure
CO-C2-BR	43	138	52.4	50	150 psi
CO-C3-BR	66.2	164	77.8	53.2	125 psi
CO-C4-BR	91.8	175	103.2	56.3	125 psi

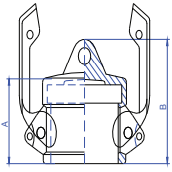


B TYPE				
Part Number	A	B	E	Pressure
B12-BR	14	44	28	250 psi
B34-BR	18	52.2	33.2	250 psi
B1-BR	25	59	39.9	250 psi
B114-BR	32	65.5	45.5	250 psi
B112-BR	38.5	69.5	46	150 psi
B2-BR	49	77	52.5	150 psi
B212-BR	60	84.5	55.5	150 psi
B3-BR	77	59.5	58	125 psi
B4-BR	100	92	59	125 psi
B12-BR-NPT	14	44	28	250 psi
B34-BR-NPT	18	52.2	33.2	250 psi
B1-BR-NPT	25	59	39.9	250 psi
B114-BR-NPT	32	65.5	45.5	250 psi
B112-BR-NPT	38.5	69.5	46	150 psi
B2-BR-NPT	49	77	52.5	150 psi
B212-BR-NPT	60	84.5	55.5	150 psi
B3-BR-NPT	77	59.5	58	125 psi
B4-BR-NPT	100	92	59	125 psi
B6-BR-NPT	151	103.75	62.75	75 psi

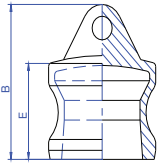
D TYPE				
Part Number	A	B	E	Pressure
D12-BR	26	43	29	250 psi
D34-BR	32.41	52.2	33.2	250 psi
D1-BR	40.49	59	39.9	250 psi
D114-BR	50.8	67.5	45.5	250 psi
D112-BR	53.98	69.5	46	150 psi
D2-BR	68.27	76	52.5	150 psi
D212-BR	80.98	84.5	55.5	150 psi
D3-BR	92.2	89.5	58	125 psi
D4-BR	125.43	92	59	125 psi
D12-BR-NPT	26	43	29	250 psi
D34-BR-NPT	32.41	52.2	33.2	250 psi
D1-BR-NPT	40.49	59	39.9	250 psi
D114-BR-NPT	50.8	67.5	45.5	250 psi
D112-BR-NPT	53.98	69.5	46	150 psi
D2-BR-NPT	68.27	76	52.5	150 psi
D212-BR-NPT	80.98	84.5	55.5	150 psi
D3-BR-NPT	92.2	89.5	58	125 psi
D4-BR-NPT	125.43	92	59	125 psi
D5-BR-NPT	150.8	96	60	125 psi
D6-BR-NPT	181	99.75	62.75	75 psi

# Cam & Groove Quick Couplings

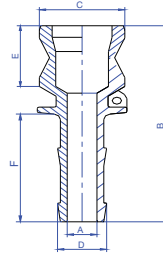
## Brass Couplings



DC TYPE		
Part Number	A	B
DC12-BR	29	36
DC1-BR	39.9	54.9
DC112-BR	46	49.5
DC2-BR	51.5	66.5
DC212-BR	55.5	70.5
DC3-BR	58	73
DC6-BR	62.75	90.75

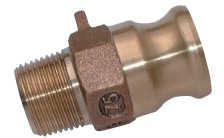
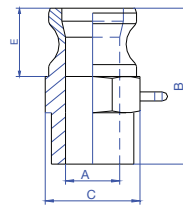


DP TYPE			
Part Number	B	E	Pressure
DP12-BR	25	34	250 psi
DP1-BR	36	26	250 psi
DP114-BR	49.5	34.8	250 psi
DP112-BR	55	40	250 psi
DP2-BR	54.5	41	250 psi
DP212-BR	61	46	250 psi
DP3-BR	65	50	150 psi
DP4-BR	64	49	150 psi
DP6-BR	65.8	50.8	75 psi



E TYPE							
Part Number	A	B	C	D	E	F	Pressure
E12-BR	8	85	24	14	23	41	250 psi
E34-BR	18.7	87	32.1	21.5	26	47.8	250 psi
E1-BR	19.5	93	36.73	27.4	33.8	55	250 psi
E114-BR	31.3	100	45.52	34.1	39	57	250 psi
E112-BR	30.8	111	53.34	39.6	41	70.5	150 psi
E2-BR	43	124	63.09	52.4	46	82	150 psi
E212-BR	56	141	75.82	66.6	48	87	150 psi
E3-BR	74	152	91.5	77.8	50	92	125 psi
E4-BR	91.8	160	119.58	103.2	52.8	103.5	125 psi

E TYPE EXTENDED TAIL							
Part Number	A	B	C	D	E	F	Pressure
CO-E2-BR	43	140	63.09	52.4	46	82	150 psi
CO-E3-BR	74	170	91.5	77.8	52	112	125 psi
CO-E4-BR	91.8	182	119.58	103.2	52	133	125 psi



F TYPE					
Part Number	A	B	C	E	Pressure
F12-BR	8	85	24	25	250 psi
F34-BR	18.7	87	32.4	26	250 psi
F1-BR	19.5	93	36.73	34.8	250 psi
F114-BR	31.3	100	45.52	40	250 psi
F112-BR	30.8	111	53.34	41	150 psi
F2-BR	43	124	63.09	46	150 psi
F212-BR	56	141	75.82	50	150 psi
F3-BR	74	152	91.5	51	125 psi
F4-BR	91.8	160	119.58	53.8	125 psi
F6-BR	150	129.8	181	57.3	75 psi
F12-BR-NPT	8	85	24	25	250 psi
F34-BR-NPT	18.7	87	32.4	26	250 psi
F1-BR-NPT	19.5	93	36.73	34.8	250 psi
F114-BR-NPT	31.3	100	45.52	40	150 psi
F112-BR-NPT	30.8	111	53.34	41	150 psi
F2-BR-NPT	43	124	63.09	46	150 psi
F212-BR-NPT	56	141	75.82	50	125 psi
F3-BR-NPT	74	152	91.5	51	125 psi
F4-BR-NPT	91.8	160	119.58	53.8	125 psi
F6-BR-NPT	150	129.8	181	57.3	75 psi