



SERIE **025S.08**

PNEUMATIC COUPLINGS
PNEUMATISCHE KUPPLUNGEN



SAFETY COUPLING WITH PUSH BUTTON
SICHERHEITSKUPPLUNG MIT DRUCKKNOPF

Interchangeability - Kompatibilität
TST 026, RECTUS 25, RECTUS 26, CEJN 320,
PARKER PEF, JWL 520, JWL 530, Legris

Temperature Range - Temperaturbereich
-20°C +100°C (-4°F +212°F)

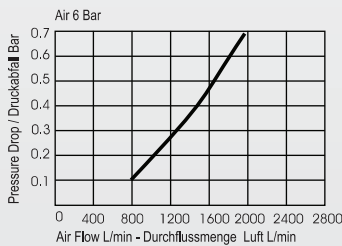
Working Pressure - Betriebsdruck
0 - 12 bar (0 - 508 PSI)

Flow capacity - Nennweite
NW - 7.4

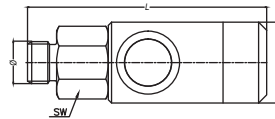
For optional orders please add the symbol
of your option end of the order no.
Bei Bestellungen Kennbuchstabe
bitte hinzufügen.

Material -Material

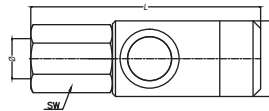
- Inner Part - Innenteil : Aluminium - Eloxal -
Aluminium - Eloxal
- Back Part - Verschluss : Brass Nickel Plated -
Messing Vernickelt
- Valve - Ventil : Steel Chrome Plated
Stahl Verchromt
- Spring - Feder : Stainless Steel -
Edelstahl
- Coupler Body - Gehäuse : Steel Chrome Plated
Stahl Verchromt
- Seals - Dichtungen : Nitrile (Ni) - NBR
- Balls - Kugeln : AISI 420 Hardened
Edelstahl AISI 420
- Push Button -
Druckknopf : AISI 420 Hardened Steel
Chrome Plated -
Edelstahl AISI 420
Verchromt



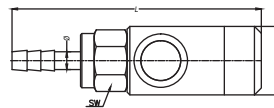
Couplers and Plugs
Kupplungen und Nippel



Male Thread Coupling
Kupplung mit Aussengewinde



Female Thread Coupling
Kupplung mit Innengewinde



Standard hose Barb Coupling
Kupplung mit Schlauchtülle

Connection Anschlüsse	Order No Bestellnr.	SW	L	ØD
--------------------------	------------------------	----	---	----

BSP 1/4"	025.S08 EG 13	20	69.3	26
BSP 3/8"	025.S08 EG 17	20	68.3	26
BSP 1/2"	025.S08 EG 21	25	70.3	26

BSP 1/4"	025.S08 DG 13	20	69.6	26
BSP 3/8"	025.S08 DG 17	20	72.3	26
BSP 1/2"	025.S08 DG 21	24	74.3	26

Ø 6 - 1/4"	025.S08 HG 06	20	83.6	26
Ø 8 - 5/16"	025.S08 HG 08	20	83.6	26
Ø 10 - 3/8"	025.S08 HG 10	20	83.6	26