

Wire Reinforced Suction Hose



Clear PVC reinforced with a tensile steel helix

Applications: Suitable for the suction and discharge of water, slurry, chemicals, sewage, granules and other waste materials; can also be used for suction and discharge of foodstuffs.

Pressures: Values given are based on the short term burst pressure of the hose at 20°C based on a 3:1 safety factor.

Note: Any increase in temperature above 20°C will result in a decline in working pressure values.

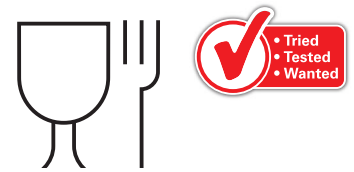
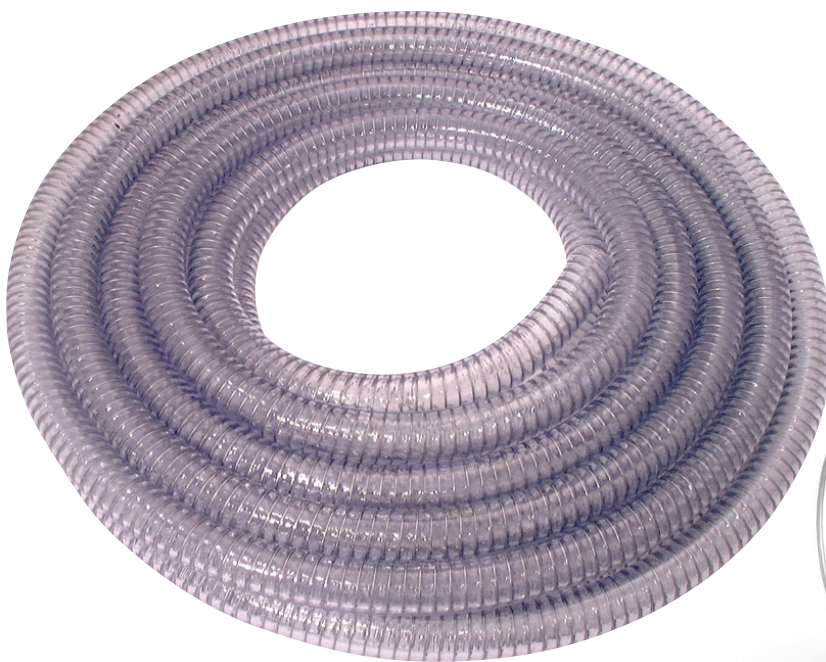
Chemical Resistance: Resistant to most oxidising and reducing agents and diluted acids and alkalis. For more detailed information please contact technical sales.

- The hose has been tested and complies with US FDA Standards (Food Grade).

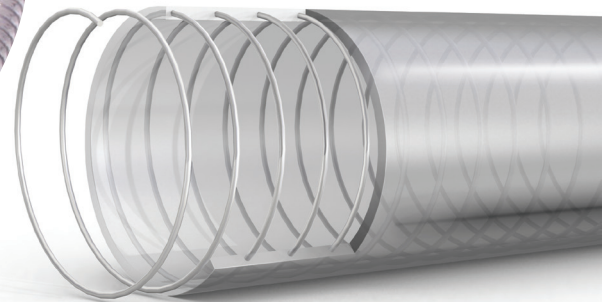
Cold bend: -45°C

Vacuum: 711mm Hg = 94% at 20°C

Approvals: Hose complies fully to EU No.10/201 and US FDA on plastic materials and articles intended to come into contact with food.



Temperature Range:
-5°C to +65°C



Part No:	Inch	ID	OD	Length	WP Bar	BP Bar	Bend Radius
FX075-10	3/4"	19	26	10	6	18	80
FX100-10	1"	25	32	10	6	18	100
FX125-10	1.1/4"	32	40	10	5	16	130
FX150-10	1.1/2"	38	47	10	5	16	155
FX200-10	2"	50	61	10	5	16	200
FX250-10	2.1/2"	64	78	10	4	14	260
FX300-10	3"	75	90	10	4	14	320
FX400-10	4"	100	116	10	4	14	430

Part No:	Inch	ID	OD	Length	WP Bar	BP Bar	Bend Radius
FX050-30	1/2"	12	18	30	6	18	50
FX075-30	3/4"	19	26	30	6	18	80
FX100-30	1"	25	32	30	6	18	100
FX125-30	1.1/4"	32	40	30	5	16	130
FX150-30	1.1/2"	38	47	30	5	16	155
FX200-30	2"	50	61	30	5	16	200
FX250-30	2.1/2"	64	78	30	4	14	260
FX300-30	3"	75	90	30	4	14	320
FX400-30	4"	100	116	30	4	14	430